

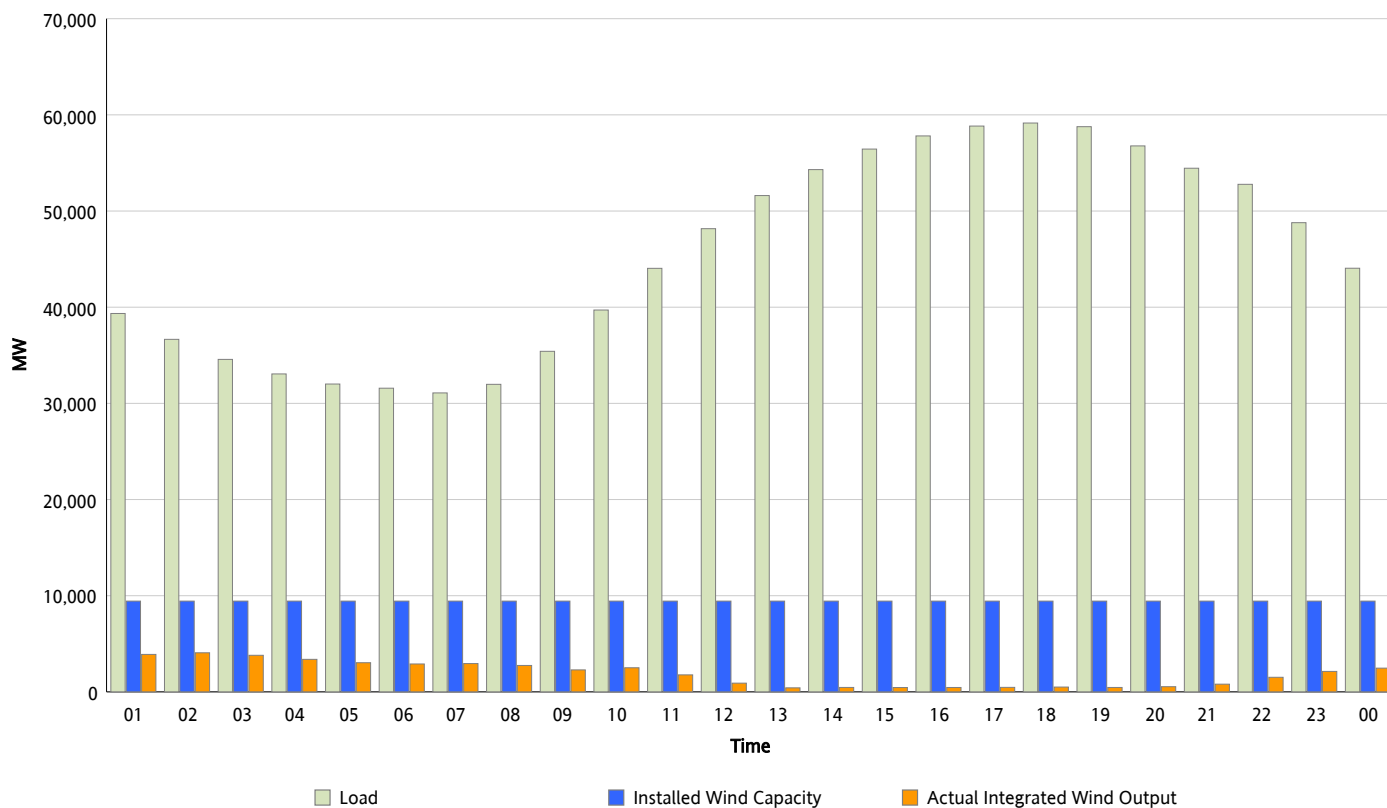


ERCOT Grid Operations

Wind Integration Report : 06/24/2012

Peak Load	59,153 MW
Load Peak Hour (HE)	18
Wind Over Peak	501 MW
Wind Record 06/19/12	8,368 MW
Max Wind Value*	4,125 MW
Wind Peak Time	01:04
Wind Integration %	10.92 %

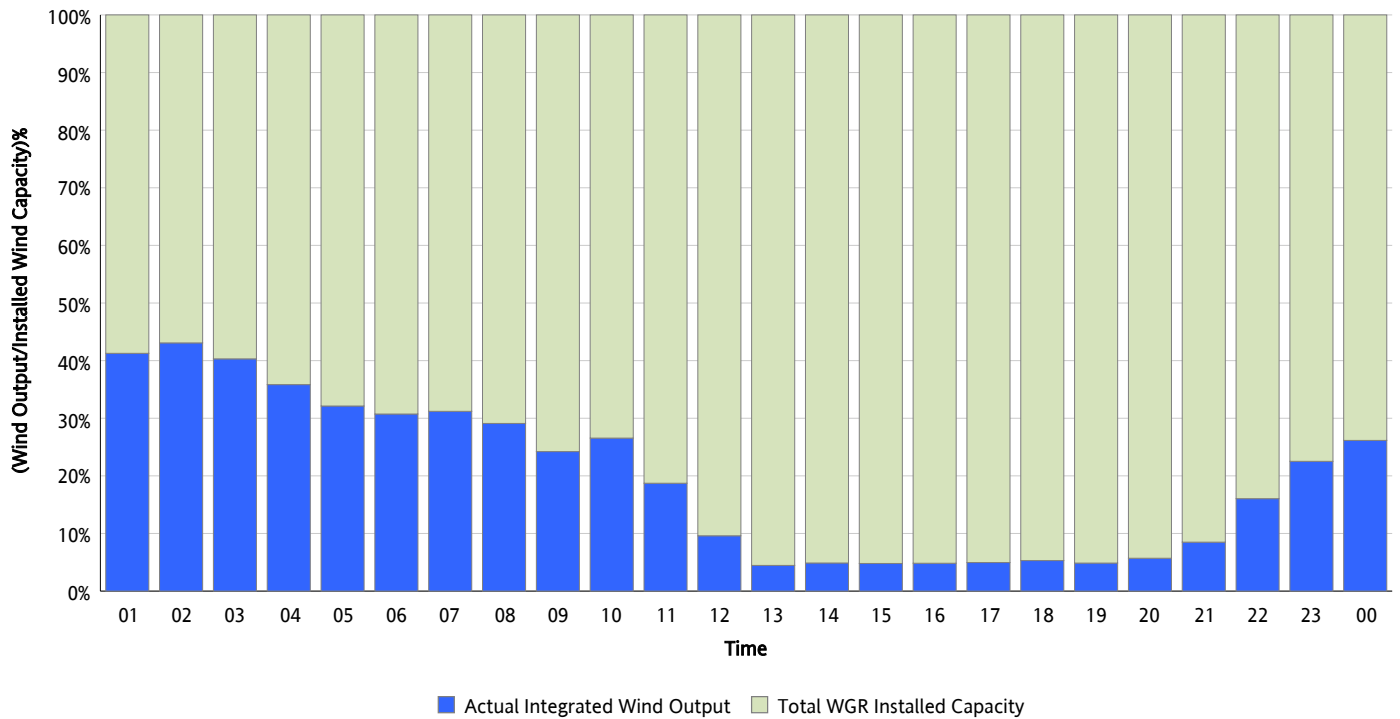
Hourly Average Actual Load vs. Actual Wind Output
06/24/2012



* Wind Record and Wind Max represent instantaneous values and the rest of the values are integrated over the hour

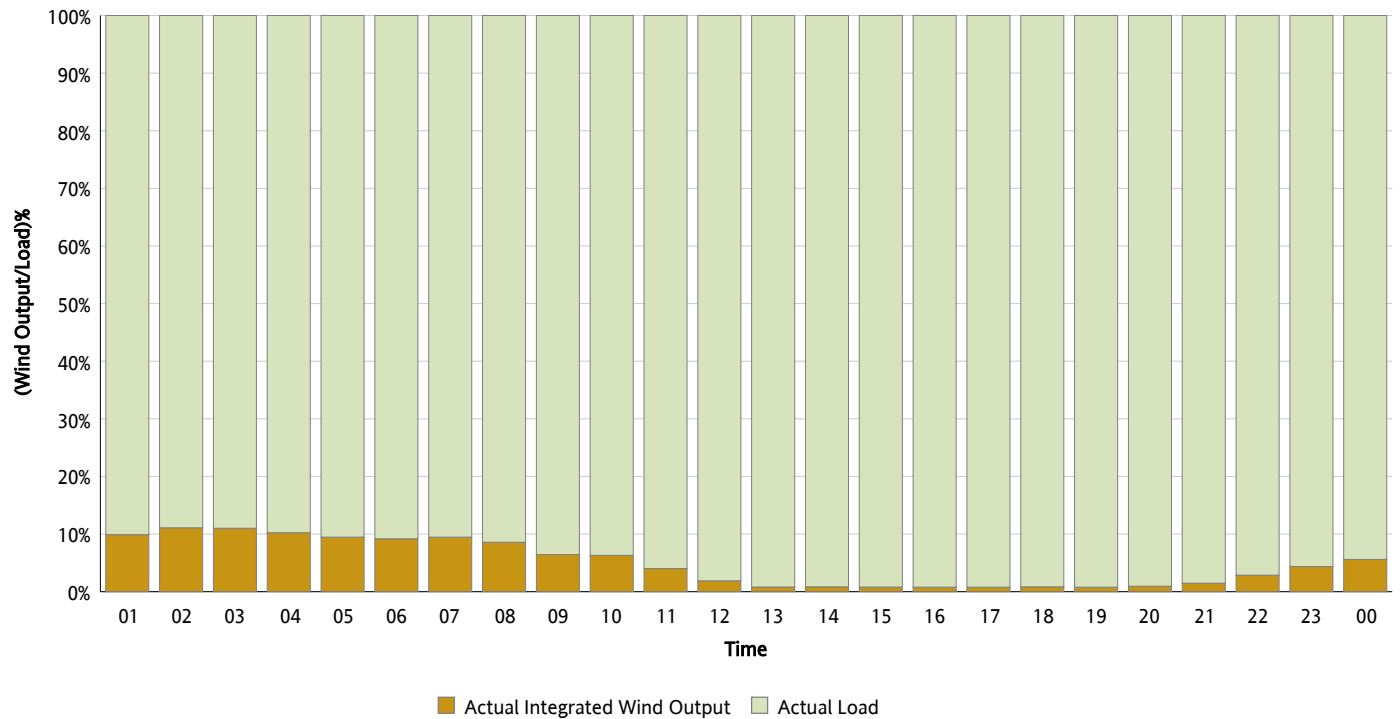
Actual Wind Output as a Percentage of the Total Installed Wind Capacity

06/24/2012



Actual Wind Output as a Percentage of the ERCOT Load

06/24/2012



ERCOT Load vs. Actual Wind Output

06/17/2012 - 06/24/2012

